

DPC-10

Hitec Brushless Servo PC Programming Interface



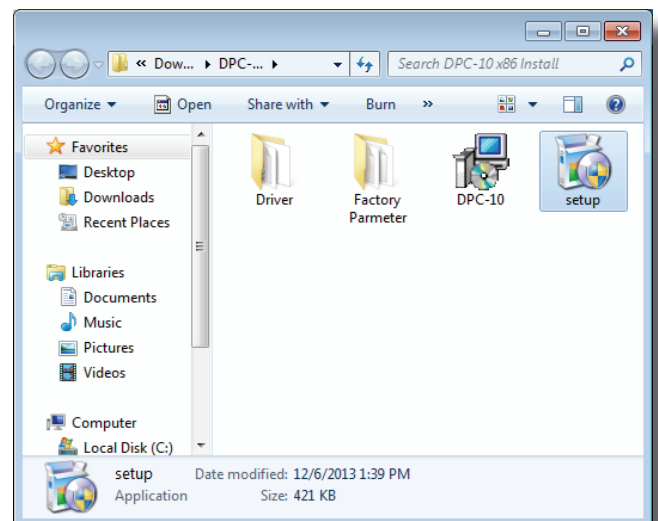
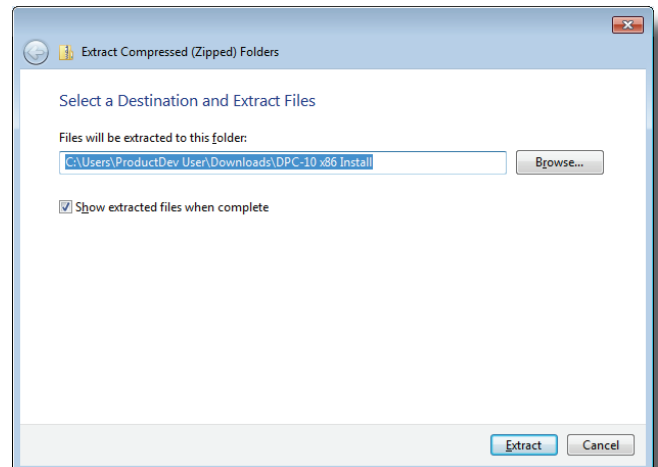
DPC-10 Software Installation for 32 bit Operating Systems (Windows 7, 8 and XP)

⚠ WARNING – Do not plug the DPC-10 into your computer until told to do so later in this manual.

1. Download Installation file DPC-10 32bit Install File DPC-10x86.zip from www.hitecrnd.com

2. Right click on the file and select "Extract All." Make sure the show extracted files box is checked.

3. Now that the files have been extracted, run the file "Setup." You may be prompted by Microsoft User Account Control asking if you would like to make changes to your computer. Click "Yes" to proceed with the installation.



DPC-10

Hitec Brushless Servo PC Programming Interface

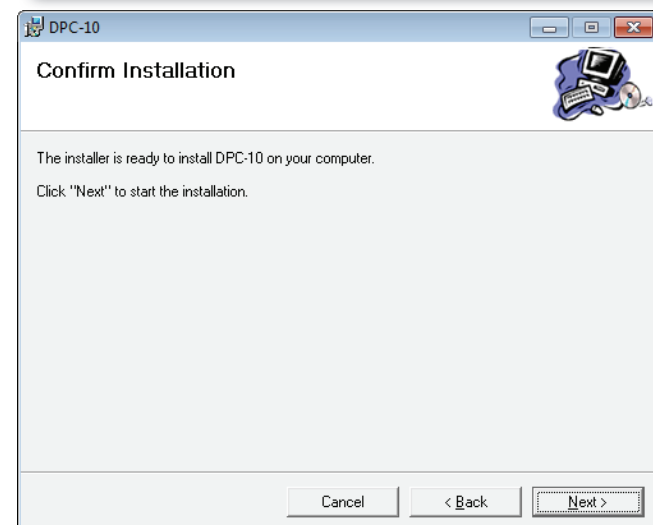
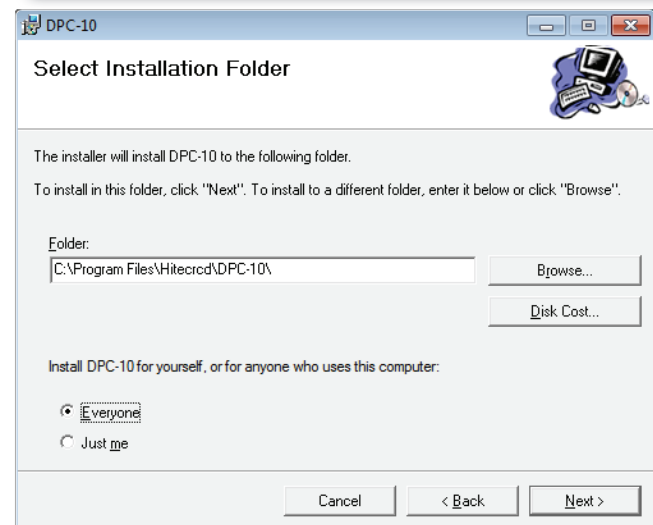


DPC-10 Software Installation for 32 bit Operating Systems (Windows 7, 8 and XP)

4. You are now at the DPC-10 Setup Wizard. Click "Next" to continue.

5. You will be prompted to select an installation folder and whether you want to give all users access to the DPC-10 software. It is recommended that you use the default folder. Click "Next" to continue.

6. At the "Confirm Installation" screen, click "Next" to start the installation.



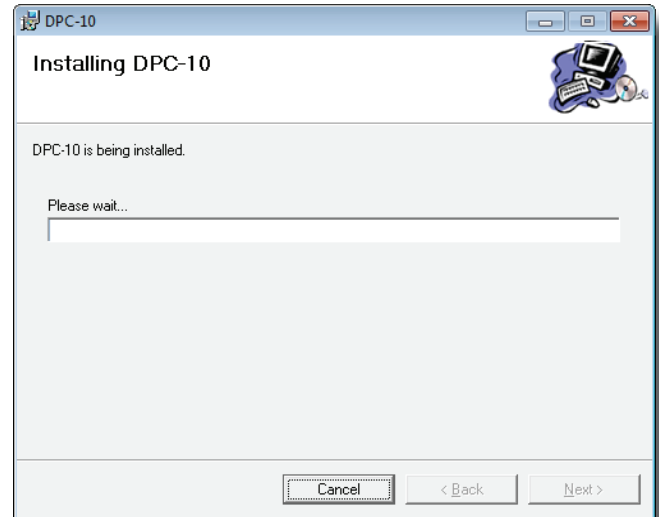
DPC-10

Hitec Brushless Servo PC Programming Interface

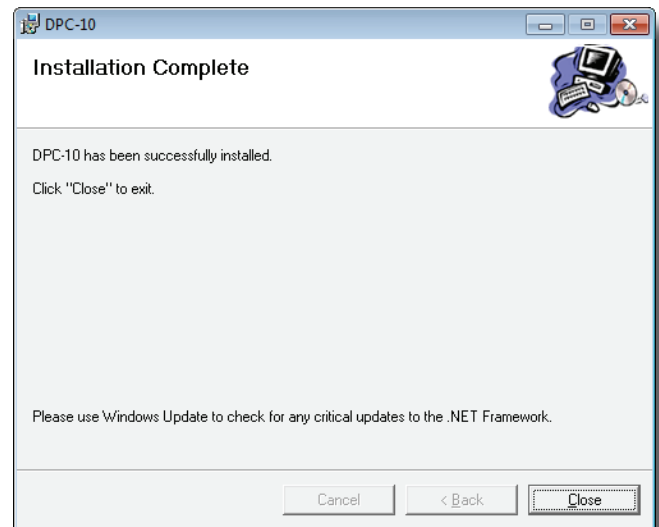


DPC-10 Software Installation for 32 bit Operating Systems (Windows 7, 8 and XP)

7. The Installing DPC-10 screen will appear with a status bar indicating its progress.



8. Once the installation is complete, click "Close" to exit the DPC-10 software installation program.



DPC-10

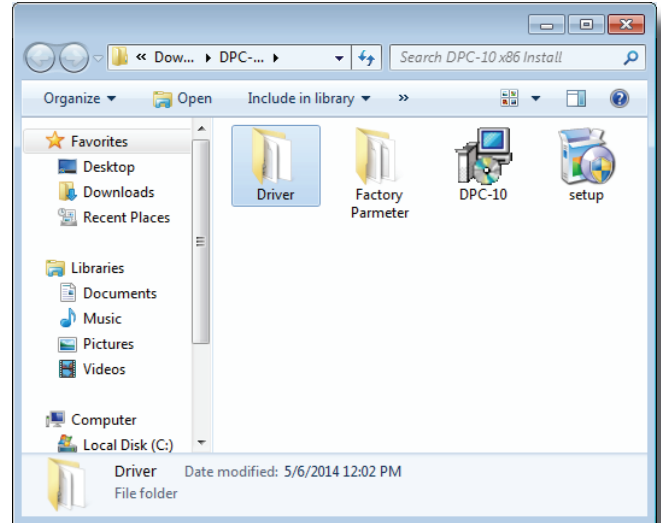
Hitec Brushless Servo PC Programming Interface



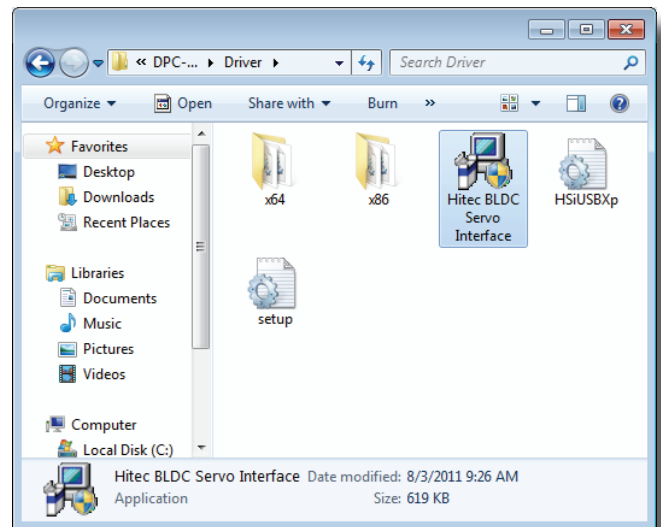
DPC-10 Software Installation for 32 bit Operating Systems (Windows 7, 8 and XP)

⚠ WARNING – Do not plug in the DPC-10 until you have completed the following steps.

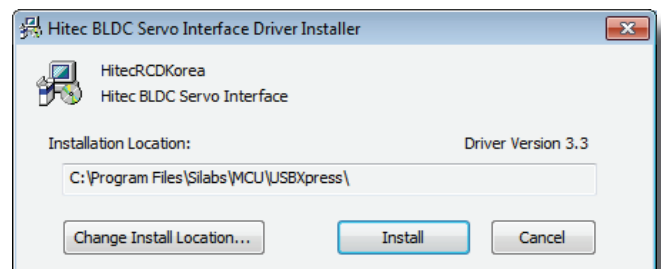
1. Go back to the folder where you extracted the installation files and open the Driver folder.



2. Click on the file “Hitec BLDC Servo Interface” to begin the driver installation process.



3. The next screen shows the driver version and installation directory. Click “Install” to proceed. The installer will scan the system for existing drivers and install the most current version.



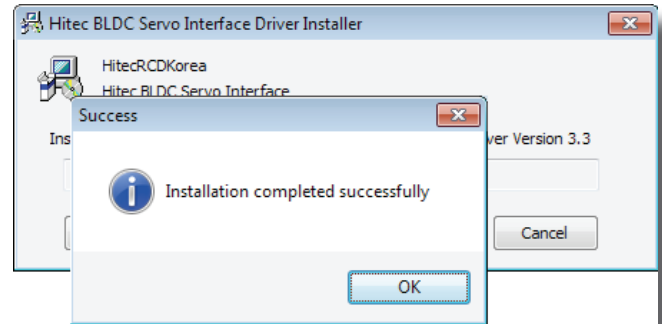
DPC-10

Hitec Brushless Servo PC Programming Interface



DPC-10 Software Installation for 32 bit Operating Systems (Windows 7, 8 and XP)

4. Once the installation has completed successfully, click "OK" to close the program.



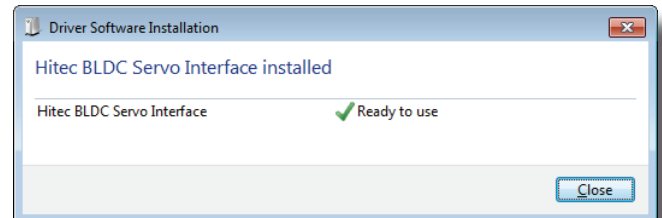
Connecting the DPC-10

⚠ WARNING – It is imperative that you use a **USB 2.0 compliant cable** to connect your **DPC-10** to your computer. **Non-compliant cables will cause erratic operation or may not work at all.**

1. Plug the USB cable into your computer and the DPC-10. Windows will now locate the driver and install it automatically.

2. Once the driver is installed, launch the DPC-10 Software from the icon on your desktop.

3. To use the DPC-10 software, refer to the DPC-10 Software Manual in the directory where you extracted the downloaded file.



Help is available from the Hitec office through phone support and e-mail. Our US office is generally open Monday thru Friday, 8:00AM to 4:30PM PST.

Phone: (858) 748 - 8440

E-mail: service@hitecrd.com

Web: www.hitecrd.com