

INSTRUCTION MANUAL

PHANTOM X4 CHARGER PART NO. 44525



INTRODUCTION

The Phantom X4 Charger is a four-channel battery charger designed and built exclusively for DJI Phantom™ 3 and DJI Phantom™ 4* Smart Batteries. This charger is capable of charging, storing and deep cycling four DJI™ smart batteries simultaneously. Two smart devices can be charged via USB ports and two remote controllers can be charged at the same time.

This unit is simple to use, but the operation of a sophisticated automatic charger such as the Phantom X4 Charger does require some knowledge on the part of the user. These operating instructions are designed to ensure that you quickly become familiar with its functions. It is therefore important that you read through the Operating Instructions, Warning and Safety Notes before you attempt to use this charger for the first time.

* By using optional adaptor part number 61116 sold separately.

™ DJI, DJI Phantom are trademarks of SZ DJI Technology Co., Ltd



Warning WARNING: THE CHARGING AND DISCHARGING OF LITHIUM CHEMISTRY BATTERIES CAN BE DANGEROUS. FAILURE TO FOLLOW THESE EXPLICIT WARNINGS CAN RESULT IN PROPERTY DAMAGE AND/OR LOSS OF LIFE.

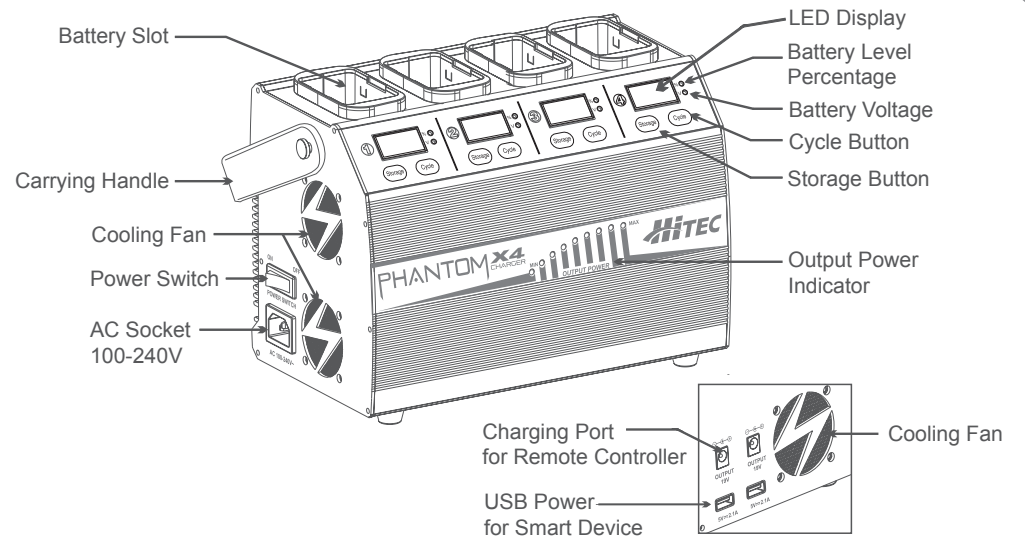
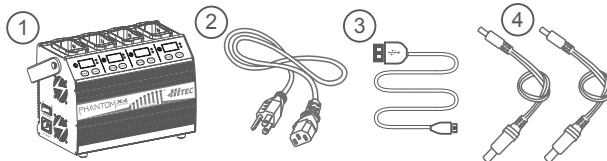
- ⚠ NEVER LEAVE YOUR CHARGER UNATTENDED WHILE IN OPERATION.
- ⚠ NEVER CHARGE ON OR AROUND COMBUSTIBLE MATERIALS.
- ⚠ NEVER CHARGE A DAMAGED BATTERY PACK.
- ⚠ THIS CHARGER IS DESIGNED AND BUILT EXCLUSIVELY FOR DJI PHANTOM™ 3 AND DJI PHANTOM™ 4 SMART BATTERIES ONLY.
- ⚠ IT IS NOT RECOMMENDED THAT YOU CHARGE AFTERMARKET BATTERIES DESIGNED FOR THESE DEVICES.
- ⚠ THE ALLOWABLE AC INPUT VOLTAGE IS 100~240V.
- ⚠ KEEP THE CHARGER WELL AWAY FROM DUST, MOISTURE, RAIN, HEAT, DIRECT SUNLIGHT AND EXCESSIVE VIBRATION.
- ⚠ IF THE CHARGER IS DROPPED OR SUFFERS ANY TYPE OF IMPACT, IT SHOULD BE INSPECTED BY AN AUTHORIZED SERVICE STATION BEFORE USING IT AGAIN.
- ⚠ DURING CHARGING, THE CHARGER MUST BE PLACED IN A WELL-VENTILATED AREA.
- ⚠ WHEN THE CHARGER IS NOT IN USE, MAKE SURE TO TURN IT OFF.

FAILURE TO FOLLOW THESE WARNINGS CAN BE CONSIDERED NEGLIGENCE BY THE OPERATOR AND MAY NEGATE ANY CLAIMS FOR DAMAGES INCURRED.

Hitec RCD USA will not be held responsible for any damages or injuries that may occur by persons who fail to follow these warnings or who fail to properly follow the instructions in this manual.

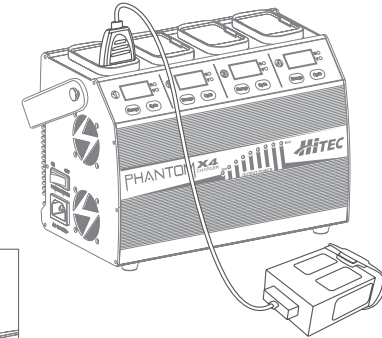
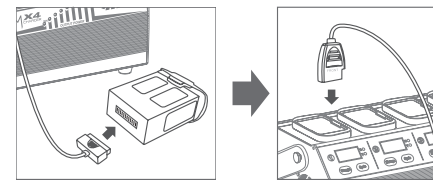
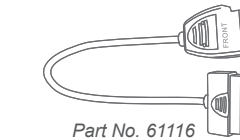
CONTENTS

1. Phantom X4 Charger
2. Power Cord
3. USB Charge Cable (Micro B type)
4. Remote Controller Charging Cable x 2



OPTIONAL PART

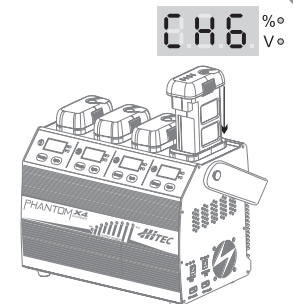
Cable Adaptor for a DJI PHANTOM™ 4 Battery



Optional Adaptor Sold Separately

CHARGING YOUR BATTERIES

1. Connect the Power Cord to the AC socket (100-240V).
2. Turn ON the Power Switch. The LED display shows "CHG" and the charger is in CHARGE MODE.
3. Insert the battery into the battery slot. The Phantom X4 Charger will communicate with the battery and send the battery into CHARGE MODE automatically. If the battery level is above 95%, turn on the battery before charging.
4. The battery's green LED will be blinking and the LED display will show the charging percentage of the battery. When the battery is fully charged, the battery's green LED's will turn OFF and the charging station will beep 5 times. Promptly remove the battery from the Phantom X4 Charger.



Insert the Battery Into the Battery Slot

STORAGE MODE

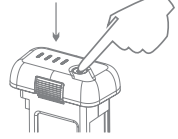
When the battery is idle for more than ten days, it is better to discharge the battery to 65% of the total power, in order to prevent swelling. If the battery level is below 65% (15.6V), you need to recharge it to 65%.

1. Push storage button, the LED will show **5f0**.
2. Turn ON the battery before you put it in STORAGE MODE. Press the Power Button once, then press again and hold for 2 seconds to turn on. The Power LED will turn red and the battery level indicators will display the current battery level.
3. Insert the battery into the battery slot. The battery's green LED will be blinking and the LED of the charger will display the voltage of the battery.
4. If the battery level is more than 65%, the Phantom X4 Charger will discharge the battery to 65%. If the battery level is below 65%, the unit will automatically charge the battery to 65% for storage.
5. When the battery level has reached 65%, the charger will beep 5 times and the display will indicate **5f0** and **5f0** repeatedly. Promptly remove the battery from the Phantom X4 Charger.

Push Storage Button



Press the Power Button Once



Press Again and Hold for 2 Seconds to Turn On

SPECIFICATIONS

- | | | | | |
|-------------------|-------------|-----------------------|-----------|-------------------|
| • Input Voltage: | AC 100-240V | • Three Charge Modes: | • Size: | 255 x 142 x 180mm |
| • Charge Power: | 100W x 4 | Charge Mode | • Weight: | 3.22kg |
| • Charge Current: | 6.0A | Storage Mode | | |
| • USB Output: | 5V/2.1A x 2 | Cycle Mode | | |
| • DC Output: | 19V/2A x 2 | | | |

CYCLE MODE

Note: For the extended life of your batteries, it is recommended that you DEEP CYCLE your batteries following 10 flight cycles.

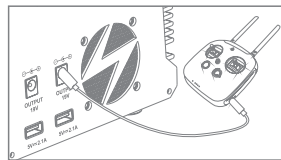
1. Push cycle button, the LED will show **CYC**.

Turning On the battery:

2. Press the Power button once, then press again and hold for 2 seconds to turn it on. The Power LED will turn red and the battery level indicators will display the current battery level.
3. Insert the battery into the battery slot. The Phantom X4 Charger will discharge it to 13.2V.
4. Once discharged to 13.2V, the Phantom X4 Charger will automatically send the battery into **CHARGE MODE**.
5. When the battery is fully charged, the battery's green LED's will turn OFF and the charging station will beep 5 times. Promptly remove the battery from the Phantom X4 Charger.

CHARGING YOUR REMOTE CONTROLLER

1. Turn ON the Phantom X4 Charger.
2. Connect your remote controller to the DC charging port using the cable supplied.
3. When the 4 LED's on the remote control are WHITE, it is fully charged.
4. Remove the cable from the Phantom X4 Charger.



CHARGING YOUR iOS DEVICE OR ANDROID DEVICE

1. Turn ON the Phantom X4 Charger.
2. Connect your Smart device to the USB port using the cable supplied by the Smart device's manufacturer.
3. When your Smart device shows 100%, it is fully charged.
4. Remove the cable from the Phantom X4 Charger.

ONE YEAR LIMITED WARRANTY

For a period of one year from the date of purchase, HITEC RCD USA, INC. shall REPAIR OR REPLACE, at HITEC RCD, INC.'s option, defective equipment covered by this warranty; otherwise the purchaser and/or consumer is responsible for any charges for the repair or replacement of the charger. This warranty does not cover cosmetic damages and damages due to acts of God, accident, misuse, abuse, negligence, improper installation, or damages caused by alterations by unauthorized persons or entities. This warranty only applies to the original purchaser of HITEC RCD, INC. products purchased and products used in the United States of America, Canada and Mexico. Batteries, plastic cases and gears are not covered by this warranty.



SERVICE AND REPAIR INFORMATION

To have your Hitec product serviced:

1. Visit the Hitec website at www.hitecrcd.com and download the service request form (under Support section).
2. Fill out the service request form completely and include a copy of your original receipt showing the purchase date.
3. Package your product in its original packaging or use a suspension-type packaging (foam peanuts or crumpled newspaper). Hitec RCD shall not be responsible for goods damaged in transit.
4. Ship prepaid (COD or postage-due returns will not be accepted) via a traceable common courier (UPS, insured parcel post, FedEx, etc.) to:

Hitec RCD USA, Inc., Customer Service Center, 12115 Paine St., Poway CA 92064

The Phantom X4 Charger satisfies all relevant and mandatory CE directives and FCC Part 15 Subpart B: 2016.

 This symbol indicates that when this type of electronic device reaches the end of its service life, it cannot be disposed of with normal household waste and must be recycled. To find a recycling center near you,  refer to the internet or your local phone directory for electronic waste recycling centers.

STATE OF CALIFORNIA PROPOSITION 65 WARNING:

This product contains chemicals known to the State of California to cause cancer. Use caution when handling this product and avoid exposure to any electronic components or internal assemblies.